



## Mobile USB memory with Remote Data Kill . .

### Even when not connected to a laptop or the Internet

Security Guardian is a small USB memory device which encrypts and tracks your mobile data. Packed with the latest technology, the integrated GPS and GSM modules give you complete control of where and how your mobile data is used. If necessary, you can remotely delete your data. By 'delete', we mean totally obliterate – even without an internet connection and regardless of whether the device is connected to a computer.

Security Guardian ensures that your mobile data remains totally secure at all times. Recent legal changes regarding personal data and information security carry significant penalties. Any company or individual compromising personal or sensitive information is in breach. Password protection alone is not acceptable.

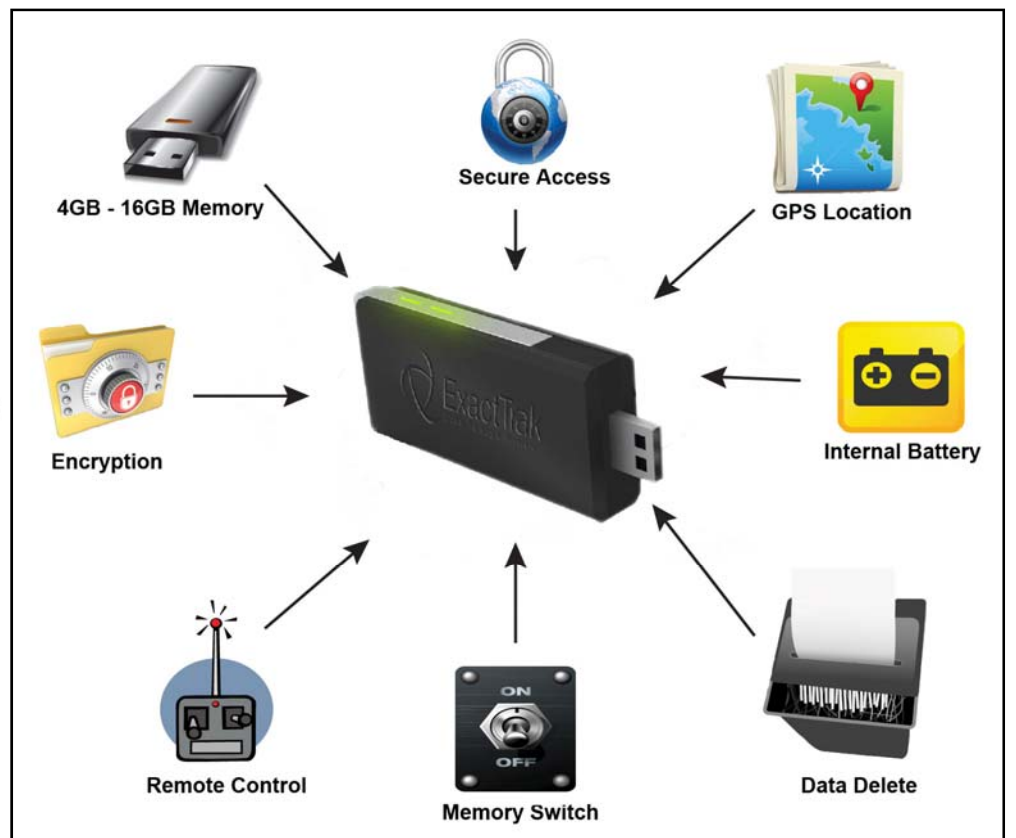
Mobile data on laptops and USB memory devices account for over 65% of recorded data losses. Even if your organisation uses encryption products, you still have significant exposure. Security Guardian is designed to enforce robust mobile security policies and provide the ability to track them.

In a survey by the Ponemon Institute for Intel, 56% of IT managers admitted that they turn off or disable their encryption. A further 35% admitted to sharing passwords with colleagues. The use and availability of all forms of mobile data has revolutionised the business arena. Security Guardian is designed to enforce robust mobile data security policies and provide the ability to track them.

- ↻ 'Fort Knox' of mobile data security.
- ↻ Keeps you legal, avoids fines and protects your reputation
- ↻ Advance port protection option ensures only fully protected Security Guardian USB memory products can be connected to your laptop.
- ↻ Large storage, up to 32GB.
- ↻ Works with all main AES 256 encryption products. Additional security features are available when deployed by approved CAPS / CESG approved products.
- ↻ Integrated GPS means that you always know exactly where your data is.
- ↻ GPRS communication module for sending commands and receiving reports.
- ↻ Remotely turn USB memory On / Off.
- ↻ Internal rechargeable battery charges when connected to a laptop and gives up to 5 days of power when not connected
- ↻ Remote 'Over the Air' update facility.
- ↻ Create authorised access / exclusion locations.
- ↻ Deploy software, security policies & updates.

With Security Guardian you, your staff and your company are fully protected and satisfy every aspect of the new legislation. As part of the Security Guardian monitoring service, there is a complete audit trail which confirms robust data security measures have been implemented.

To secure your data and stay legal, email [info@exacttrak.com](mailto:info@exacttrak.com) or call +44 (0) 845 643 7314 for more information.



<b>Feature</b>	<b>Function</b>	<b>Benefit</b>
<b>USB memory design</b>	Lightweight, convenient, small size and shape.	Small enough to be carried in a pocket. Standard USB connection for any laptop.
<b>4GB –32GB memory option</b>	Data storage.	Enough data storage for large files, graphics, pictures and programmes.
<b>Works with major encryption products</b>	Provides additional data protection.	Enables customers to protect data with their standard encryption product or Assured Security Products from <a href="#">#becrypt</a>
<b>Integrated GPS module</b>	Provides real time location information of Security Guardian units.	GPS provides location information and can be used to set up authorised access or exclusion zones.
<b>Integrated GPRS module</b>	Provide communication to and from the Security Guardian unit.	Remote commands can be sent to the Security Guardian unit to alter its operation, such as Turn Off data access.
<b>Internal Battery</b>	<b>Provides power even when not connected to a host product.</b>	Enables commands to be sent to Security Guardian. Uses can remotely delete sensitive data and identify its current location even when not connected to a laptop.
<b>Remote memory kill</b>	<b>Allows the memory store to be remotely turned on and off. Even when not connected to a host.</b>	When turned off, there is no user access to the memory store and the data is secure. Can be remotely activated from the monitoring centre, secure SMS or in conjunction with GPS module for location based availability.
<b>Remote install</b>	<b>Performs set tasks based upon customer requirements.</b>	<b>Allows remote automatic installation of programmes, policies and upgrades. An example would be the automatic installation</b>
<b>Cloud based Management Console</b>	<b>Provides real time location and status information.</b>  <b>Administration console sends commands to remote Security Guardian units.</b>	Hosted on the Fujitsu Global Cloud Platform providing world-wide coverage.  Optional dedicated system hosted on a customer'  Provides services tailored to customer requirements.  Full managed service or Self monitored.  monitoring centre.